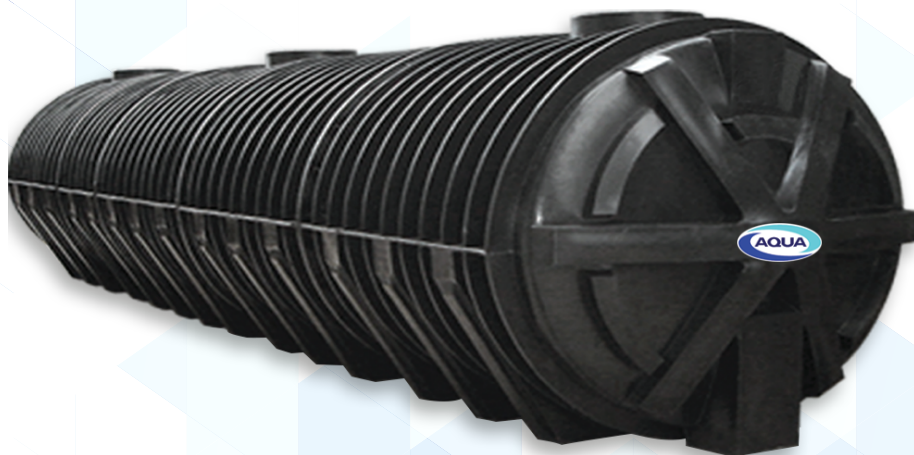


AQUA BIO COMPACT (ABC)



Quality Water for Quality Life



AQUA BIO COMPACT is a special design for treating domestic wastewater. Treated wastewater quality meets class A standard in Ministry of Natural Resources and Environment. All equipments selected are for ease operation, maintenance and energy saving. This product is suitable for medium to large scale facilities.

3 stage treatment process

Stage 1: Solid separation tank, to separate solid fraction from wastewater.

Stage 2: Anaerobic filter tank, use of anaerobic micro organisms attached to the media to digest the pollutants in wastewater with no energy consumption.

Stage 3: Aerobic filter tank, use of aerobic micro organisms to digest the pollutants in the wastewater. In this tank air blower sends oxygen into the system for micro organisms metabolism. Treated wastewater meets the effluent standard after passing Chlorine chamber to disinfect treated wastewater before discharge to public drain.

Tank body is made of Polyethylene (PE) , The type of PE is Linear Low Density Type Medium Density (LLDPE) which is standardized by Thai Industrial Standard TISI 816-2556 the tank is tested and approved through standardized tests by vacuum test and Loading test (National standard of Canada CAN/CSA B66-16) and with our skilled engineering practices we can assure the tank will withstand soil pressure.

Aqua flex is made of special reinforced natural Rubber to avoid bursts in case of ground subsidence where unequal or differential settlement may cause problems for a building's foundations.

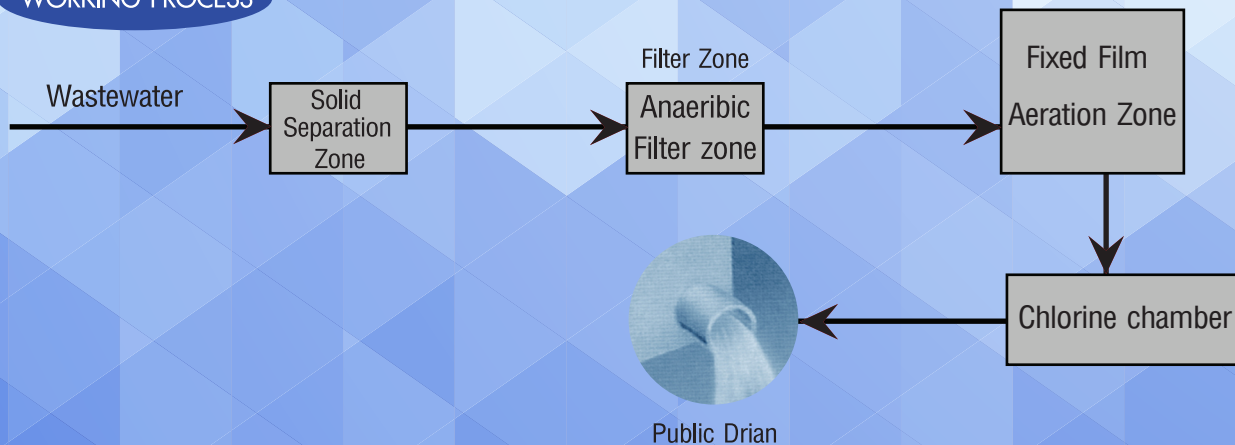
Plastic Media is made from Polyethylene (PE) designed for durability, anti-clogging and for micro bacteria organisms to attachment on surface areas of the media.

ABS is an engineering plastic which is long lasting, light weighted and very durable in all weather and environmental conditions.

Air Blower

A selection for best air blower for easy installation, easy maintenance and with efficient energy saving. Noise pollution is low as 40-50dB(A)/m. Product life span is approximately 20,000 hours.

WORKING PROCESS



QSP-SL-07-11(0)-EN

AQUA NISHIHARA CORPORATION LIMITED

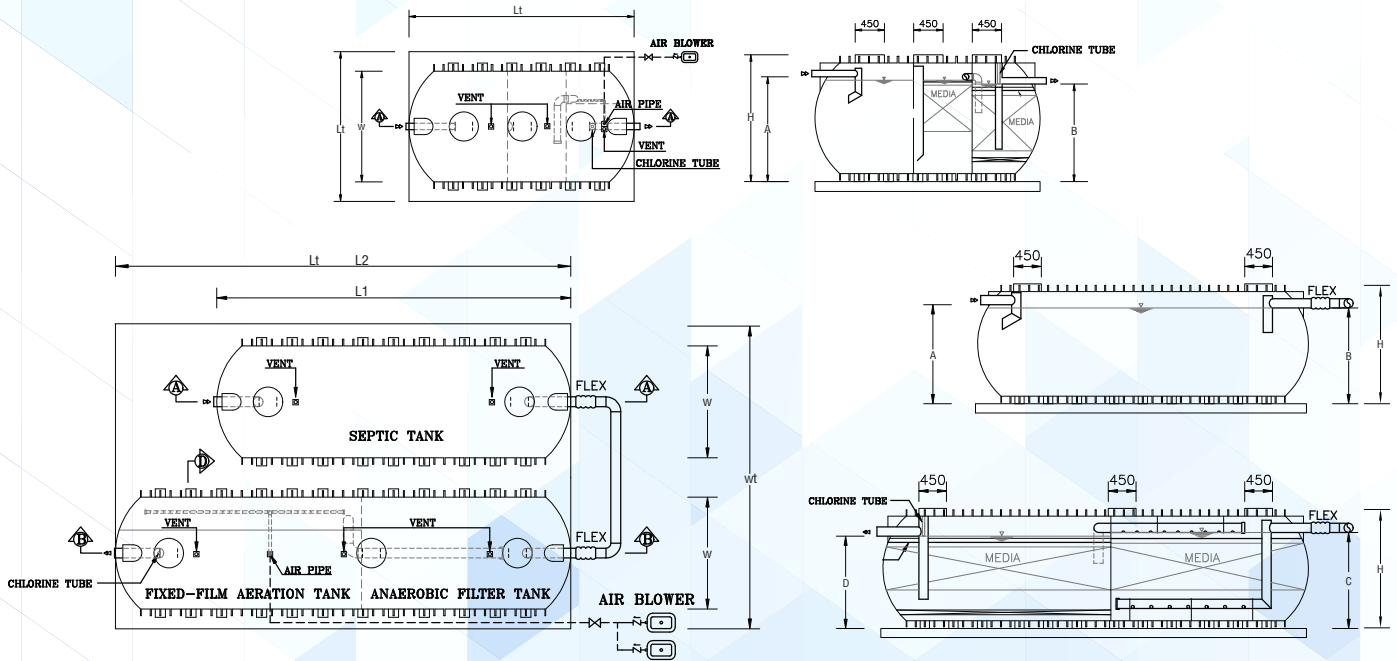
202/12 Soi Prawit Lae Phuean, Prachachuen Road,
Ladysao, Jatujak, Bangkok 10900
Tel. (+66) 2954 3341-4, (+66) 2589 9717

www.aqua.co.th
Sales@aqua.co.th
@aquanishihara
https://www.facebook.com/fanpage.anc





Quality Water for Quality Life



Population							
Model	Residential All Activities	Office	Factory		School		University
		All Activities 80 lpcd	A pour flush toilet 50 lpcd	A cistern flush toilet 80 lpcd	A pour flush toilet 50 lpcd	A cistern flush toilet 80 lpcd	All Activities 80 lpcd
ABC-04	20	50	80	50	80	50	50
ABC-05	25	62	100	62	100	62	62
ABC-07	35	87	140	87	140	87	87
ABC-08	40	100	160	100	160	100	100
ABC-10	50	125	200	125	200	125	125
ABC-12	60	150	240	150	240	150	150
ABC-15	75	187	300	187	300	187	187
ABC-20	100	250	400	250	400	250	250
ABC-25	125	312	500	312	500	312	312
ABC-30	150	375	600	375	600	375	375
ABC-35	175	437	700	437	700	437	437
ABC-40	200	500	800	500	800	500	500

TECHNICAL DATA OF AQUA BIO-COMPACT TANK (ABC-SERIES)																		
Model	Flow rate (m³/d)	Volume of tank (m³)			Actual Volume (m³)	Dimensions						Pipe level (mm.)				Pipe size (mm.)		Air Blower
		ST/T	AF/T	FF/T		W	H	L		Wt	Lt	A	B	C	D	inlet	outlet	Capacity (l/min)
								L1	L2									
ABC-04	4	2.79	2.17	1.70	6.65	1900	1950	3610	-	2300	3610	1610	1500	-	-	100	100	80
ABC-05	5	3.33	2.47	2.17	7.97	1900	1950	4250	-	2300	4250	1610	1500	-	-	100	100	100
ABC-07	7	3.88	3.20	3.21	10.29	1900	1950	5380	-	2300	5380	1610	1500	-	-	150	150	150
ABC-08	8	4.60	2.68	3.93	11.21	1900	1950	5830	-	2300	5830	1610	1500	-	-	150	150	200
ABC-10	10	5.02	3.92	3.99	12.93	1900	1950	6280	-	2300	6280	1610	1500	-	-	150	150	200
ABC-12	12	6.82	4.33	4.21	15.36	1900	1950	7820	-	2300	7820	1610	1500	-	-	150	150	240
ABC-15	15	8.22	4.83	5.35	18.40	1900	1950	8910	-	2300	8910	1610	1500	-	-	150	150	300
ABC-20	20	10.55	6.15	7.09	23.79	1900	1950	5380	6920	4600	6920	1610	1560	1560	1500	150	150	400
ABC-25	25	11.61	7.98	9.21	28.80	1900	1950	7370	7370	4600	7370	1610	1560	1560	1500	150	150	600
ABC-30	30	13.95	9.01	10.37	33.33	1900	1950	8460	8460	4600	8460	1610	1560	1560	1500	150	150	600
ABC-35	35	15.07	10.82	11.91	37.80	1900	1950	9360	9360	4600	9360	1610	1560	1560	1500	150	150	800
ABC-40	40	17.38	13.24	14.03	44.65	1900	1950	10450	10450	4600	10450	1610	1560	1560	1500	150	150	800

*The company reserves the right to make changes or revisions to the information contained in this document without prior notice.

lpcd = litre per capita per day